

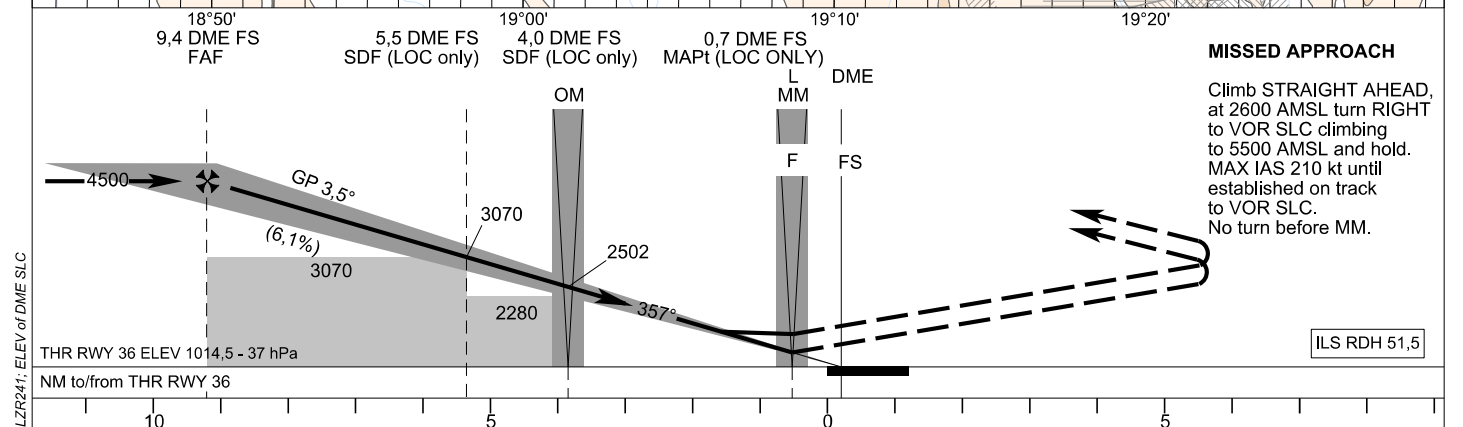
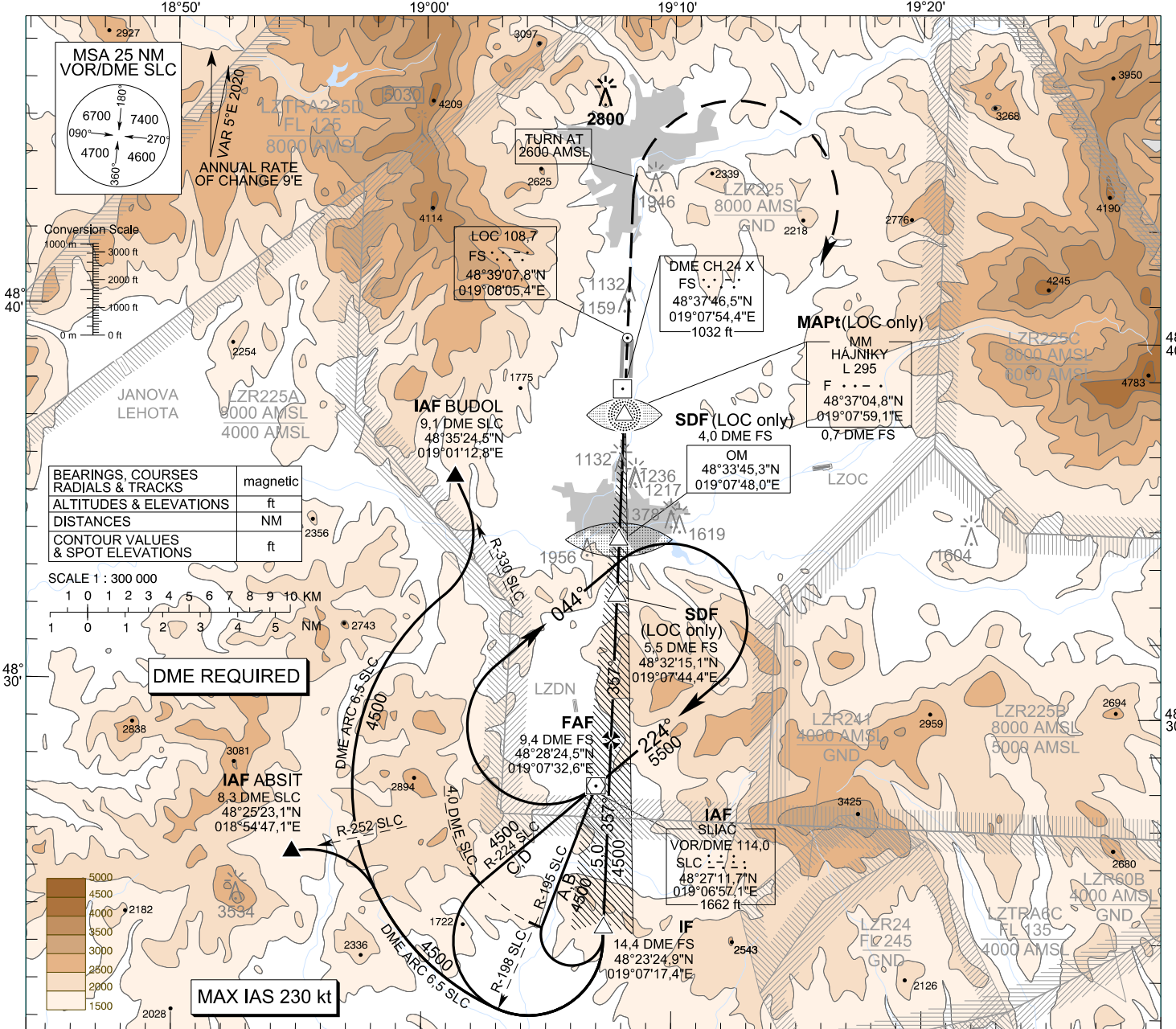
**INSTRUMENT
APPROACH
CHART - ICAO**

TRANSITION ALTITUDE
10 000 ft

AD ELEV 1043,8 - 38 hPa
THR RWY 36 ELEV 1014,5 - 37 hPa

SLIAČ APPROACH/RADAR 119,155
SLIAČ TOWER 122,905

**SLIAČ (LZSL)
ILS CAT I or LOC Z RWY 36
ACFT CAT A/B/C/D**



OCA (OCH)	ASC	A				B				C				D						
		CAT I		without SDF		with SDF		without SDF		with SDF		without SDF		with SDF		without SDF		with SDF		
2,5%	ft	1763 (749)	1777 (763)	1787 (773)	1800 (786)	3070 (2056)	1940 (926)	3070 (2056)	1520 (506)	2410 (1366)	2810 (1766)	2840 (1796)	4361	3989	3617	3246	2874	2502	2131	1759
5,0%	ft	1176 (162)	1186 (172)	1202 (188)	1220 (206)															
2,5%	ft																			
5,0%	ft																			
Circling (* see Note)		ft				ft				ft				ft						

Ground speed kt: 70 90 100 120 140 160 180
FAF - MAPt (8,7 NM) min:sec: 7:27 5:47 5:13 4:20 3:43 3:15 2:54
Rate of descent (6,1%) ft/min: 434 557 619 743 867 991 1115
 Timing not authorized for defining the MAPt