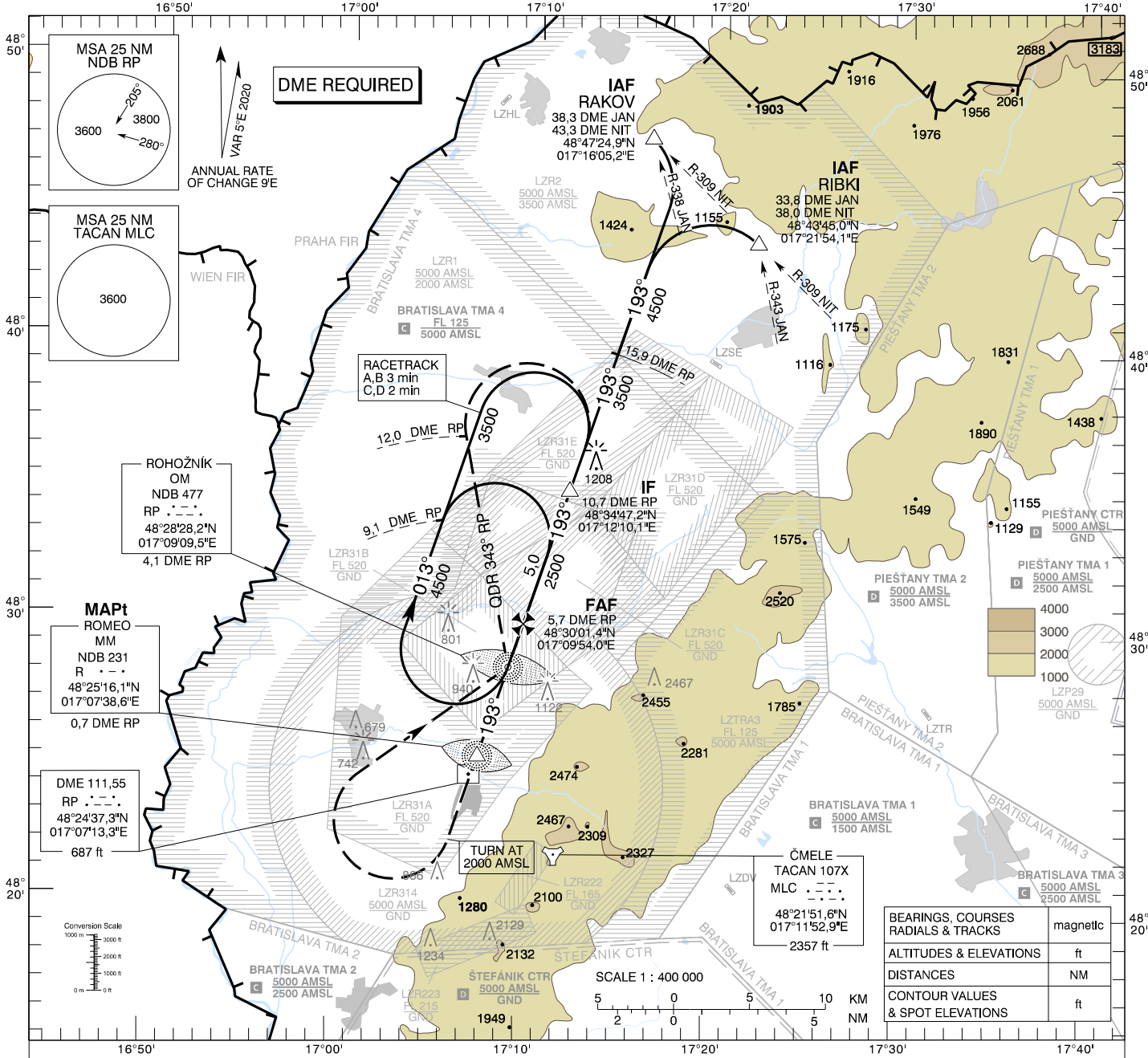


**INSTRUMENT  
APPROACH  
CHART - ICAO**

**TRANSITION ALTITUDE**  
10 000 ft  
AD ELEV 689 - 25 hPa  
THR RWY 19 ELEV 686 - 25 hPa

**MALACKY RADAR** 120,750 (259,625)  
**MALACKY TOWER** 129,575 (120,750)

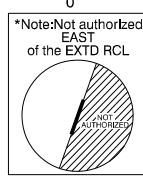
**MALACKY (LZMC)**  
**NDB RWY 19**  
**ACFT CAT A/B/C/D**



**MISSED APPROACH**  
Climb STRAIGHT AHEAD, at 2000 AMSL  
turn RIGHT to NDB RP, climbing to 3500 AMSL.  
At NDB RP turn LEFT to track 343°  
(QDR 343° RP), at 12 DME RP turn RIGHT  
to join the hold or initiate another approach.  
MAX IAS 185 kt. No turn before MAPt.

THR RWY 19 ELEV 686 - 25 hPa  
NM to/from THR RWY 19

OCA (OCH)	ASC	A	B	C	D
Straight-in Approach	2,5%	1730 (1041)			
	4,0%	1570 (881)			
Circling (* see Note)	ft	1730 (1041)		1810 (1121)	
	m	1800	2800	3600	4600



DME RP	NM	5,0	4,0	3,0	2,0	1,0
ALTITUDES	ft	2275	1957	1638	1320	1001

Ground speed	kt	70	90	100	120	140	160
FAF - MAPt (5,0 NM)	min:sec	4:17	3:20	3:00	2:30	2:09	1:53
Rate of descent (5,2%)	ft/min	372	478	531	637	743	849

Timing not authorized for defining the MAPt.

BEARINGS, COURSES RADIALS & TRACKS	magnetic
ALTITUDES & ELEVATIONS	ft
DISTANCES	NM
CONTOUR VALUES & SPOT ELEVATIONS	ft

CHANGES: LZR131A and LZR131B withdrawn; new LZR31A, LZR31B, LZR31C, LZR31D, LZR31E established